



Business Edition adds Documentation and Simulation facilities to BPMN itp-commerce positions its Business Edition of Process Modeler as a tool for business analyst to ease the demand for straight forward and customizable process documentation capabilities. Its sophisticated element numbering, process simulation and query based reporting facilities valuably enhance the tight integration and automated generation into Microsoft Office's Word and Excel.

itp commerce Ltd
Wankdorf | Center
Papiermühlestrasse 73
CH-3014 Berne
Switzerland
Phone: +41 31 3053 444
Fax: +41 31 3053 443
sales@itp-commerce.com
www.itp-commerce.com

PROCESS MODELER FOR MICROSOFT VISIO™

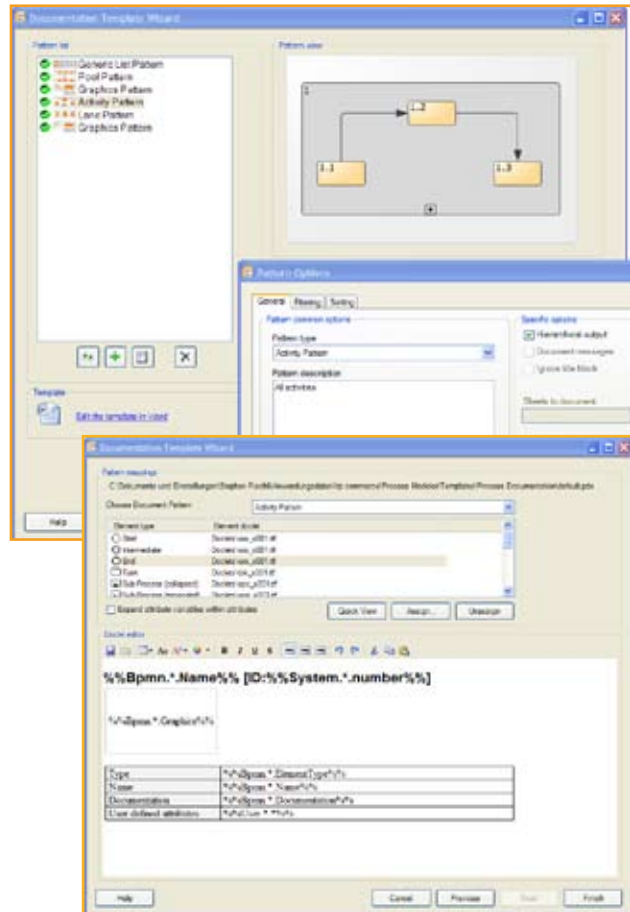
BUSINESS



Process Documentation

Business Edition delivers extensive support to generate both process documentation and reports to the hands of a business analyst.

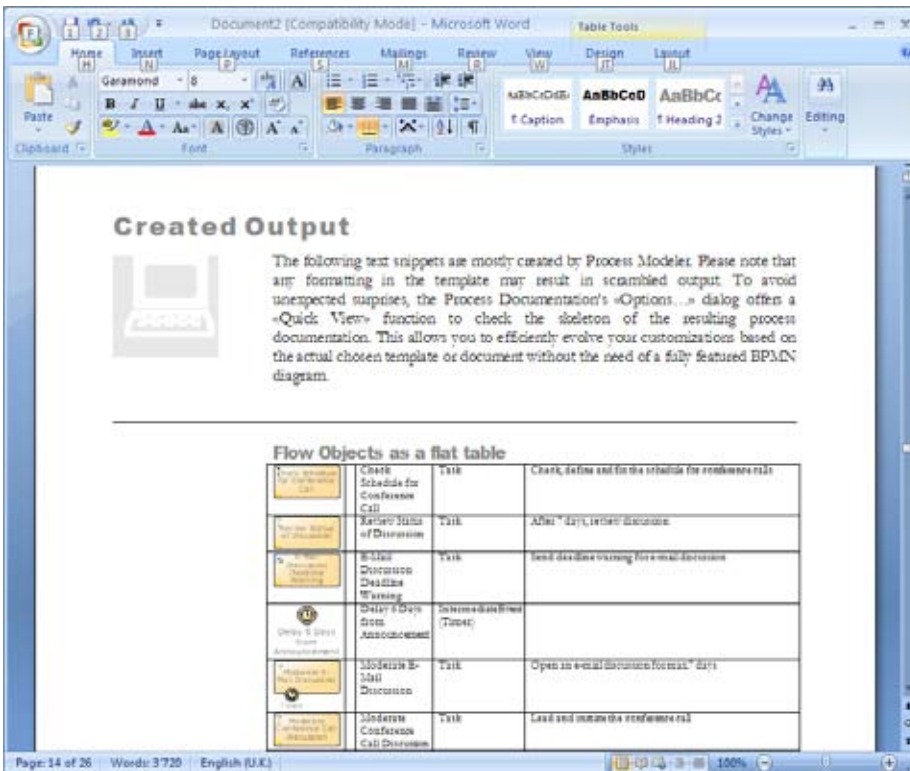
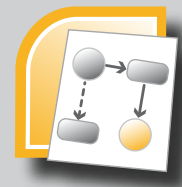
When designing large and comprehensive business processes, much nongraphical information will be gathered as attributes or referenced files. Besides the pure process control flow, additional documentation parts, such as custom descriptions of roles, activities and data objects or topological relations between different BPMN elements are of high importance to conclude an overall process description. A selective generation of process documentation, like "I want to see all activity descriptions inside a particular lane", become reality. Process Modeler allows to export out of the model all information directly into the MS Word environment. Based on Word templates (DOT) and so-called „Doclets“, the documentation can be realised respecting internal documentaiton rules. The documentation templates makes possible to document in a good manner even highly complex models.



Documentation wizard aids the user in the template and doclet management. Using the wizard the existing templates can be modified or extended. The whole pattern management is now much easier due the user friendly interface. With a few mouse clicks new patterns can be inserted into the template or the existing can be modified. Furthermore the syntax error is checked on each pattern reading. Regardless of the pattern management or the doclets mapping the whole template process is done in a couple steps making a process documentation easier as never before.

BUSINESS

- > 100% BPMN
- > All Foundation Features
- > Automated Process Documentation (Word)
- > Reporting (Excel)
- > Team Repository
- > Process Simulation (Model Analysis, Animation and Trace)
- > Element Numbering
- > Automated diagram conversion from PowerPoint, Excel and Visio to BPMN drawings
- > Context Sensitive Help
- > Examples



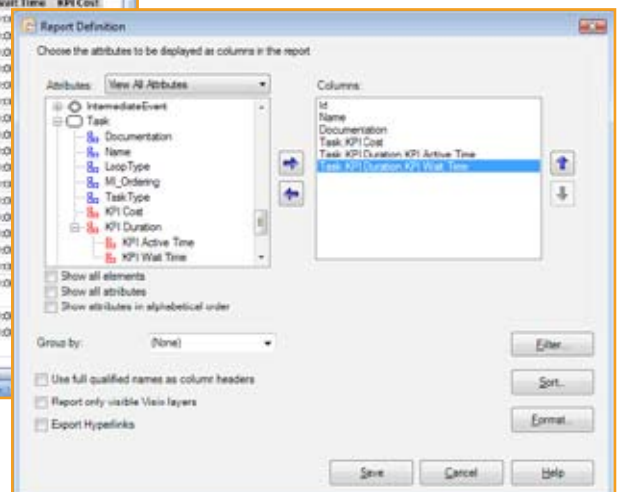
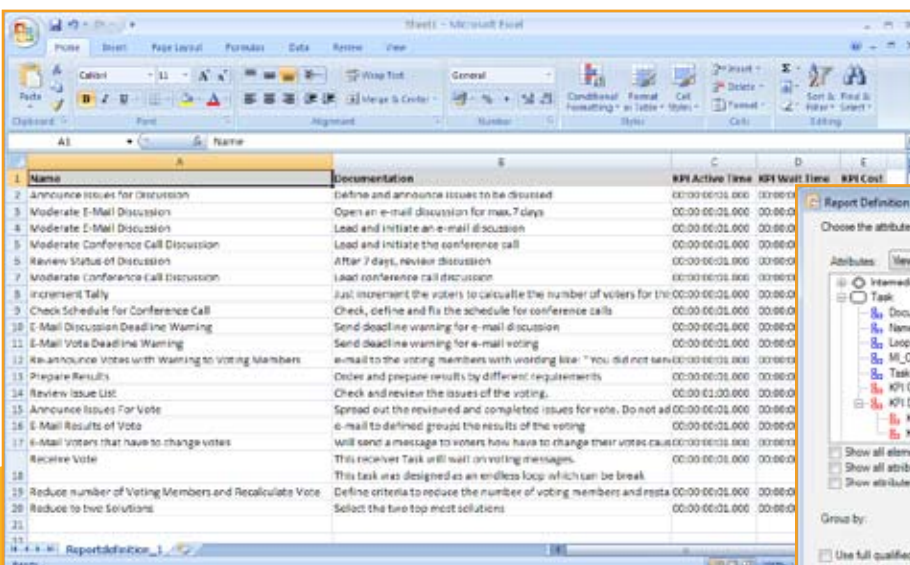
From Business Edition onwards, Process Modeler may either endorse customizable Microsoft Word Templates or existing Microsoft Word files as destination for BPMN diagram output (re)generation.

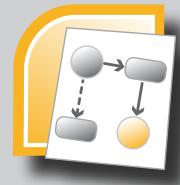
Reports

The extensive data model of business processes, with both BPMN specific and user defined attributes, is flexibly evaluable into Microsoft's Excel file format using Process Modeler's reporting facility.

Creation of a MS-Excel file or a simplified text file (.csv) is possible. By using MS-Excel templates, the user will be able to design its own output.

The Reporting function allows to query the whole object model. The Reportings can be used if the output has to be a listing. Process Modeler allows the definition of Reportings through the user. Free questioning can be defined and saved. Selections, classifications simplified formats can be saved in the report. OR and AND operations are allowed. Every element can be queried of similarity, dissimilarity, smaller/bigger, existence and pattern matching.





Simulation

Process Modeler permits the realistic simulation and analysis of the constructed process models. Based on exemplary Key Performance Indicators (KPI) and resource definitions an example of a configuration for the real-time simulation which demonstrates the bottlenecks of the Processes.

- > predefined KPI's (cost, duration with active and waiting time)
- > Possibility to define your own KPI's
- > Definable Calculation points on every flow control element
- > Resource modeling with definable resource scenarios
- > Enhanced output into Excel of a simulation run
- > Storable simulation scenarios
- > Flow control with probabilities and percentages on Gateways
- > External data sources for KPI's
- > Replay mode to analyze a simulation run
- > Model debugging (including break points and flow animation)
- > Process Instance properties which can be used to define more specific expressions on Gateways

The simulation is based on the indications about the resources used (availability of people or systems, workload, capacity and costs), the Key Performance Indicators of the activities (duration, user-specific Key Performance Indicators such as the quality, specific process factors etc.) as well as the statistical indications concerning the flow control at points of decision (Gateways).

Several simulation-scenarios can be defined and saved. Results of simulations are being displayed in Excel for later analysis or can be replayed in the replay mode. Additionally Key Performance Indicators of external data sources such as Excel or even databases can be used during the simulation.

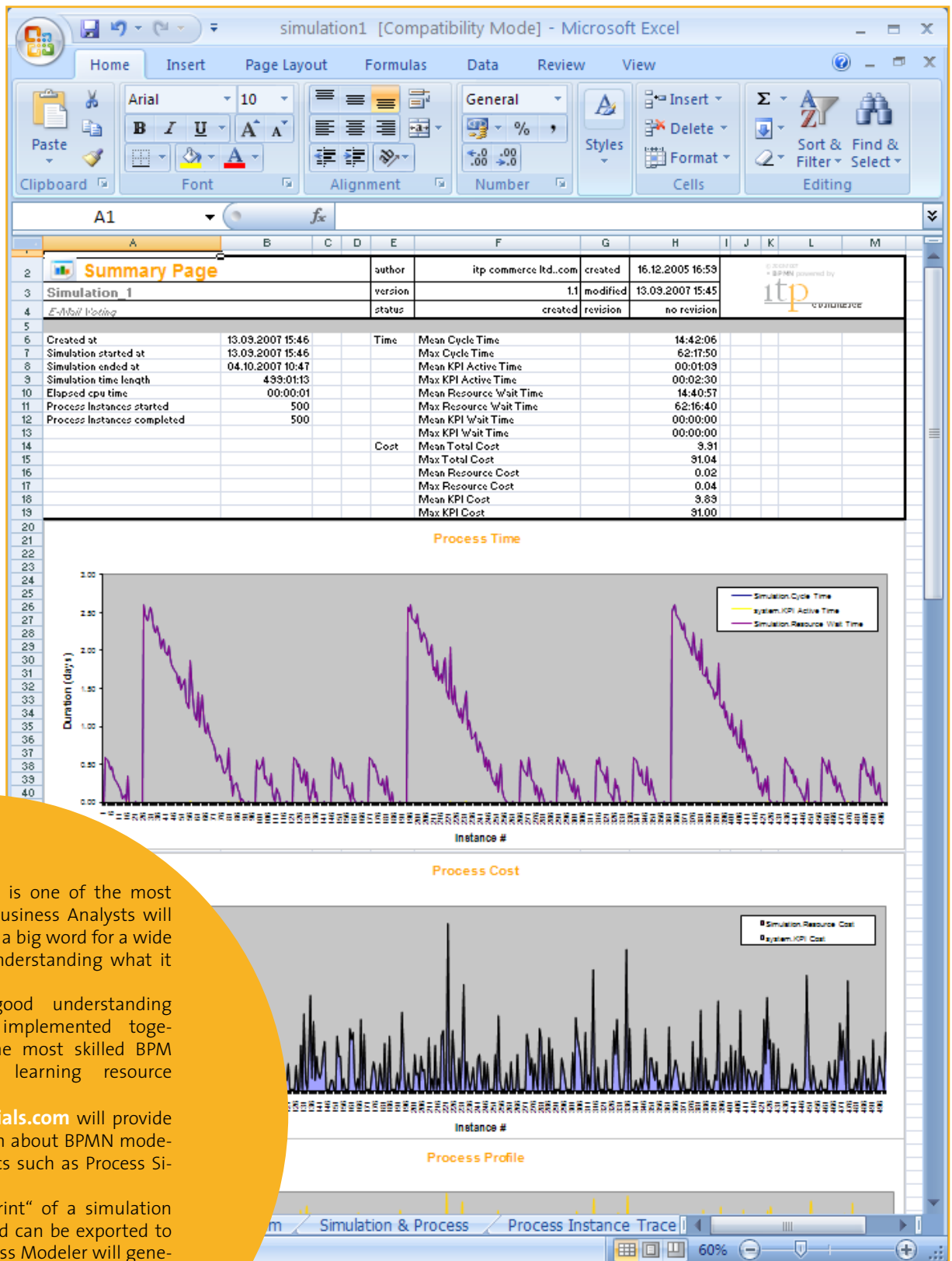
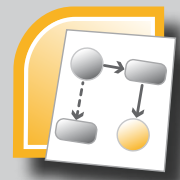
Change Simulation Settings

Sequence Flows

| Element | Next element | Probability | Calculated |
|---------|-------------------------|-------------|------------|
| Yes | Discussion Cycle (Su... | 50.0 % | 51.5 % |
| No | Reduce (Sub-Process) | 47.0 % | 48.5 % |

The sum of all probabilities is actually below 100%.

Probability: Default Probability in percent (47.00 %)

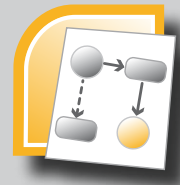


Process Simulation is one of the most important features Business Analysts will look for. Simulation is a big word for a wide spread area of misunderstanding what it really means.

To increase the good understanding of this we have implemented together with one of the most skilled BPM experts the BPM learning resource BPMessentials.com.

> www.bpmessentials.com will provide several of information about BPMN modeling and special topics such as Process Simulation.

The so called „footprint“ of a simulation run will be stored and can be exported to Microsoft Excel. Process Modeler will generate this output based on a Excel template or an existing excel sheet.

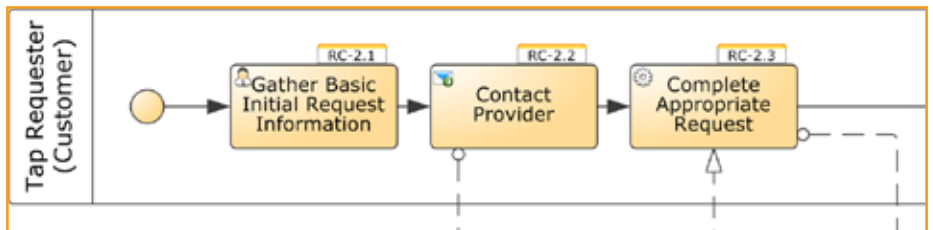


Element Numbering

Smart element numbering is an important prerequisite for the generation of highly automated process documentation. Unique numbers are often used to easily identify and reference graphical BPMN elements in related documents and reports. Business Edition delivers efficient support for automated and interactive element numbering on partial and complete diagrams choosing from a list of formatting options. Element number shapes will be graphically

glued to its related element shapes. All principal functions are equally available on diagram, sheet, group and shape level. Easy

renumbering, screen or print hiding and deletion make this a truly valuable facility.



Automated Diagram conversion from any Visio or Office document

Process Modeler allows to convert any Visio diagram or even any Office document (Power Point or Excel) to real BPMN diagrams (BPD's). You will be able to define conversion rules which can be stored in a template. Well known, Visio stencils such as UML/Activity diagrams, Flow Charts or EPC diagrams will be predefined and enriched if necessary with special conversion rules. For unknown or „home made“ diagram types, rules are built in which will calculate a mapping assumption which can be edited easily.

