



PROFESSIONAL



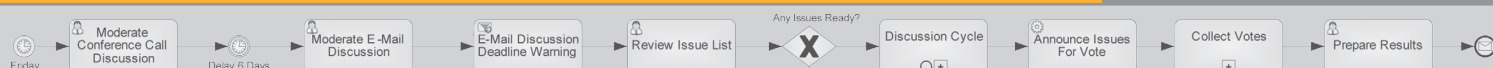
Professional Edition adds BPEL, XPDL and XLANGs to BPMN

Extending its Business Edition of Process Modeler, itp commerce positions the Professional Edition as a tool for IT specialists to transfer BPMN process diagrams into executable workflow environments (aka process engines). Its export functionality covers the rising BPEL (XML based Business Process Execution Language) standard making process lifecycle engineering possible between business and IT units. A sophisticated BPEL validation mechanism optionally supports the user to define partly or fully valid Web Services instrumentation before actually performing the BPEL export.

itp commerce Ltd
Wankdorf | Center
Papiermühlestrasse 73
CH-3014 Berne
Switzerland
Phone: +41 31 3053 444
Fax: +41 31 3053 443
sales@itp-commerce.com
www.itp-commerce.com

PROCESS MODELER FOR MICROSOFT VISIO™

PROFESSIONAL



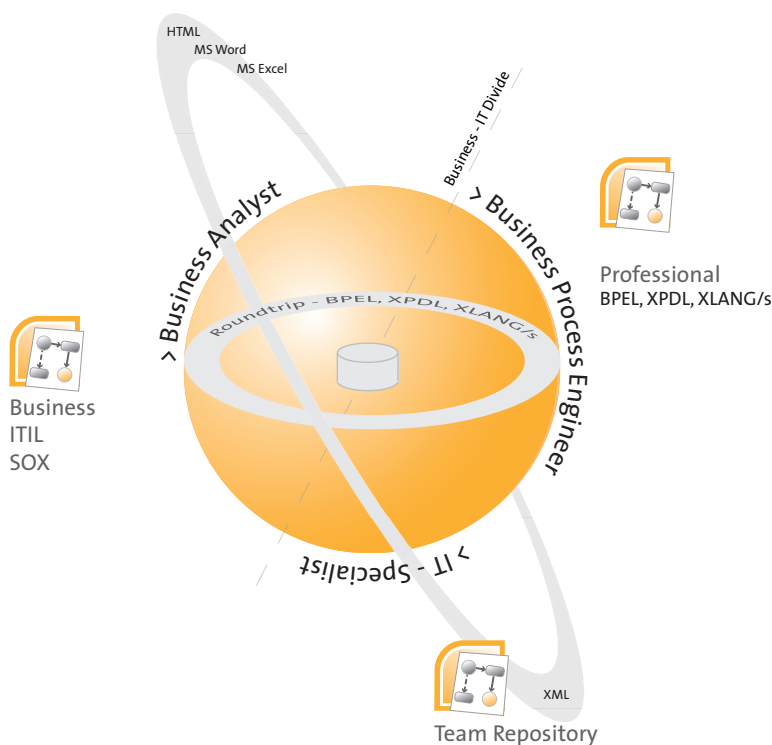
Principal BPEL Engineering Lifecycle

Process Modeler for Microsoft Visio™ has been among the first tools to spread the BPMN news, tightly coupled with the widely accepted Microsoft Office suite. BPMN is a good start, but there are a lot more value added functionalities to take care of.

That's why, Professional Edition addresses the IT department by offering the capability to enrich BPMN models with Web Services instrumentation to produce valid BPEL exports. Compliant BPEL infrastructures will then be able to import the business analyst's process definition for final orchestration and deployment.

Furthermore, there will be a list of vendor specific process engine infrastructures to be directly supported by extensions to Process Modeler Professional Edition for tight integration and helping to bridge the gap between business analysts and the IT specialist's development and deployment environment even better.

The Universe of Business Process Management



PROFESSIONAL

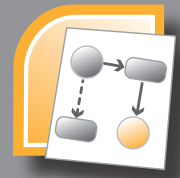
- > 100% BPMN
- > Based on Standard and Business Edition
- > BPMN to BPEL Mapping Validation
- > BPMN to XPDL Mapping Validation
- > BPMN to XLANGs/ODX Mapping Validation
- > Import of WSDL Definition Files
- > BPEL, ODX and XPDL Import/Export
- > Context Sensitive Help
- > Examples
- > Tutorial

Modeling Phase (analytical process model)

The business analyst will create the initial Process in BPMN. It is important to understand that business should always be the driving force in creating new processes or in changing the flow of existing processes. The created, modified and optimized BPMN process is exportable through the business process engineer to any process development environment which supports either BPEL, XPDL or XLANG/s.

Development Phase (technical process model)

The exported processes (either BPEL, XPDL or XLANG/s) will be imported into the process development environment. The IT specialist will refine and enrich the process with technical data (so called instrumentation). The instrumented process will be deployed to an execution environment.



BPMN to BPEL, XPDL or XLANG/s

Mapping

What vendor driven initiatives and products have lacked for years, has now been introduced by the OMG: BPMN, a universally applicable and standardized notation for business processes, which has been endorsed by many vendor due to its conceptual simplicity and versatility.

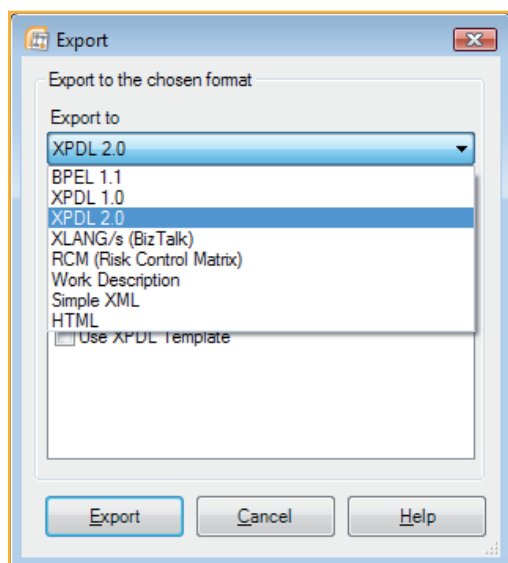
From the architectural point of view, BPEL (Business Process Execution Language for Web Services) introduces the power of Web Services driven SOA landscapes to business processes. One might think of BPEL as the glue between business processes and the IT implemented business logic kept behind technology neutral Web Services. Therefore, the BPMN working group has chosen BPEL to be the first execution language to be mapped.

Professional Edition follows the mapping rules of the BPMN specification and supports a mapping to XPDL, BPEL or XLANG/s. Custom dialogs and a set of BPEL, XPDL or XLANGs specific validation rules assist in the instrumentation procedures for valid BPMN diagrams. The tool makes it easy to visually track down faulty instrumentations and delivers suitable and customer friendly textual explanations.

BPEL, XPDL and XLANG/s

Output

When exporting, missing instrumentations are replaced by default definitions to deliver valid BPEL, XPDL or ODX export files and to enable the user to finish the orchestration procedure in his BPEL, XPDL or XLANG/s editor of choice. Instrumented BPEL, ODX or XPDL files can be easily imported back to Process Modeler.



BPEL, XPDL and XLANG/s

Roundtrip

Process Modeler is capable to import process definitions from BPEL, XPDL and XLANG/s to a BPMN diagram. The import creates a new BPMN diagram in using a powerful engine for the creation of an initial layout.

It is furthermore also possible to import into an existing BPMN diagram and thus make the vision of a true roundtrip come true.

```
<process name="ItineraryReservation"
  suppressJoinFailure="no"
  xmlns="http://schemas.xmlsoap.org/..." >
  <partnerLinks>
    <partnerLink name="itineraryReservationPT_PL"
      myRole="itineraryReservationPTService" />
    ...
  </partnerLinks>
  <variables>
    <variable name="itinerary_MessageData" .../>
    ...
  </variables>
  <sequence>
    ...
    <scope name="MakeReservation">
      <faultHandlers>
        ...
      </faultHandlers>
    </scope>
  </sequence>
</process>
```