



TEAM REPOSITORY



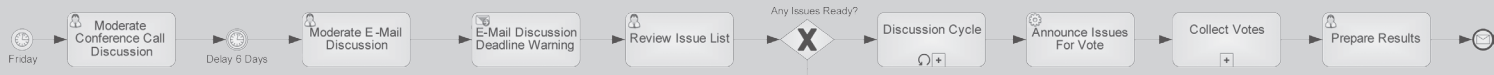
The Team Repository feature extends Process Modeler by a powerful function for the administration of Business Process Diagrams (BPD) and any kind of documents

Support for ORACLE, MS-SQL and MySQL

itp commerce Ltd
Wankdorf | Center
Papiermühlestrasse 73
CH-3014 Berne
Switzerland
Phone: +41 31 3053 444
Fax: +41 31 3053 443
sales@itp-commerce.com
www.itp-commerce.com

PROCESS MODELER FOR MICROSOFT VISIO™

TEAM REPOSITORY



Relational storage

Contrary to purely binary documents as for example Microsoft Office documents, Visio™ Business Process Diagrams (BPD) will be dissolved during storage into relational structures and will be stored in relational tables. This makes the access to the attributes of a BPD by means of SQL queries precisely.

Document storage history

The Repository supports administration of all kinds of documents based on a effective history concept. By document revisions, changes become pursuable. The access to older versions becomes very easy by navigating in the document history.

Controlled document access (checkin/checkout)

The Repository secures the simultaneous access of several users to the same document. By an implicit „Checkin/CheckOut“ mechanism the access protection will be guaranteed. Changes in the multi-user surrounding field will be ensured.

Access control

The Repository can be used by its developed authentication and authorization concept by a small Workgroup up to enterprise installation. The security concept covers the definition of user and group authorizations as well as the definition of access rights on documents and folders.

Hierarchical storage

The Repository permits the hierarchical organization of documents on the persistence store. In this way the documents can be referred several times. Powerful inquiry dialogues will support the search based on keywords, date, versions, author etc.

Reuse of BPMN elements across diagram borders

The Repository allows to break through the delimitation on a diagram. So useful BPMN elements can be referred by other diagrams of the Repository. Thus a re-use of general elements becomes possible for roles (Lanes), Pools or Data Objects. Likewise whole subprocesses or tasks can be referred. The Repository provides the preservation of the consistency over document revisions.

Administration of any kind of documents

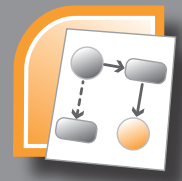
The Repository permits the administration of all BPDs and additionally, the administration of any kind of documents. Likewise the linked documents of a BPD are stored and versions are made automatically in the Repository. External files can be imported simply by „drag & drop“.

TEAM REPOSITORY

- > Relational storage
- > Document storage history (Revisions and Branches)
- > Controlled document access (checkin/checkout)
- > Access control
- > Hierarchical storage
- > Reuse of BPMN elements across diagram borders
- > Administration of any kind of documents
- > XPDL/BPEL Import/Export of multiple diagrams
- > HTML export of multiple diagrams
- > Context Sensitive Help
- > Tutorial

TEAM REPOSITORY

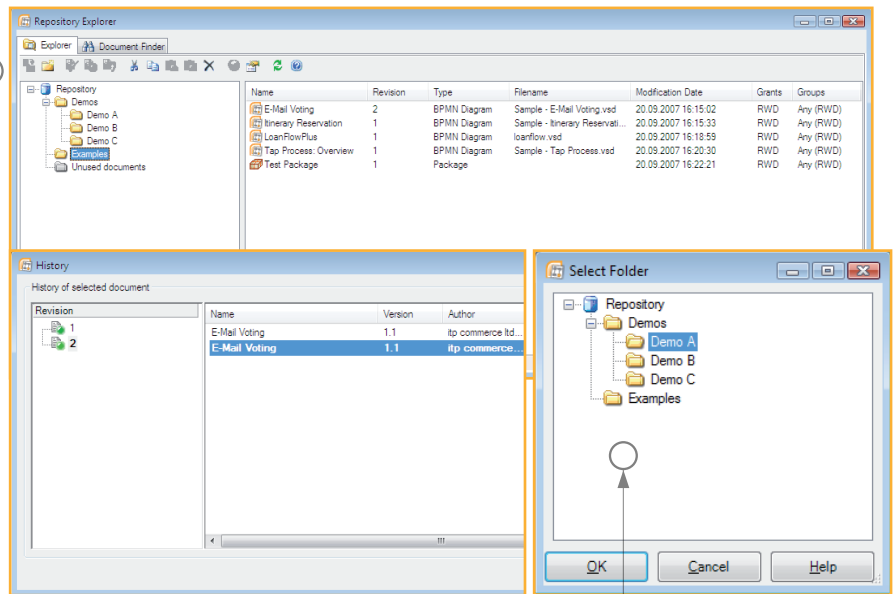
PROCESS MODELER FOR MICROSOFT VISIO™



Manage your diagrams and documents

With the Model Repository feature you will get a powerful database solution to manage your business process models and all other document types. This feature allows to span your business process models across multiple Visio diagrams. All relevant diagram data such as BPMN attributes, system defined attributes and versioning information will be stored in relational data structures and can be queried with common SQL reporting tools. The repository feature is able to manage Versions of the Visio document in the history as well as check in and check out of diagrams. The repository feature is designed for multi-user usage and can also administrate base access rights.

The central element of the Team Repository is the Repository Explorer. Repository Explorer allows to manage all your documents in the repository regardless of their type. From that point of view you can use the Team Repository as a powerfully document management system of every document type. To maintain documents you will be able to use the versioning feature of the repository. The version concept is based on a document revision trunk and possible document branches.



Organize your diagrams

You can organize your diagrams into a folder structure similar to the file system on your hard disk. So you can organize your RDBMS model base on the same way as you would do it in the file system except that you will store to a relational database such as Microsoft SQL Server, ORACLE or MySQL.

Reuse of BPMN elements from the repository

One of the most powerful concepts of BPMN is the reuse of sub-processes tasks. In addition, we did implement another powerful concept – the usage of identicals from the local diagram or the repository. The model repository allows you to reuse those elements across diagram

borders. If the Model Repository feature is available in Process Modeler you can define references to tasks or sub-processes through the repository. Process Modeler will store the reference as long as the referenced diagram exists. Diagrams with references on it can not be deleted. Every diagram and its associated data base will be stored and historized within the repository. You can easily get this information from the repository.

